



PIONEERED BY THE
ROCKEFELLER FOUNDATION

100 RESILIENT CITIES

CONFIDENTIAL – Not for Distribution

Financing Resilience Webinar: Introduction to Resilience & 100 Resilient Cities

4 October 2018

Questions

- Are you familiar with 100RC and its work?
- Do you know the US cities that are part of 100RC network?
- Do you know the Chief Resilience Officer?

Communities of all sizes need to build their resilience to cope with the range of shocks and stresses accelerated by urbanization, globalization, and climate change. The time for resilience building is now

Urbanization



Half of the world's population currently resides in cities, and this will grow to 70% by 2050

Globalization



The world is becoming more integrated – causes and impacts of shocks and stresses reach across geographies

Climate Change



Climate continues to change, increasing the intensity, frequency, and unpredictability of natural hazards

Shocks and stresses can bring opportunities for communities to evolve, and in some circumstances, transform

Urban Resilience

is the capacity of individuals, communities, institutions, businesses, and systems to **survive, adapt, and grow** no matter what kinds of **chronic stresses** and **acute shocks** they experience.



CHRONIC STRESSES

weaken the fabric of a city on a day-to-day or cyclical basis. Examples of these stresses include high unemployment; an overtaxed or inefficient public transportation system; endemic violence; and chronic food and water shortages.



ACUTE SHOCKS

are the sudden, sharp events that threaten a city, including earthquakes, floods, disease outbreaks, and terrorist attacks.

Building resilience requires looking at a community holistically – understanding the systems that make up the community and the interdependencies and risks they may face

Resilience Dividend is the net social, economic, and physical benefits achieved when designing initiatives and projects in a **forward thinking, risk aware, inclusive, and integrated way**. There are two distinct types of advantages/benefits:

Better Outcomes

Investing in resilience will reduce and help prevent the impact of shocks and stresses to the city's people, physical environment, and the economy, accelerate recovery, and improve the quality of life for the city's residents

Co-Benefits

Addressing resilience challenges in an integrated and holistic way will help the city realize multiple benefits across sectors and stakeholders

100 Resilient Cities
is the **leading platform**
for **building urban**
resilience around the
world

\$170M mobilized from The Rockefeller Foundation to pioneer 100 Resilient Cities

1,000 applications from prospective cities reviewed; **100 member cities** selected through three rounds of challenges

95 employees globally supporting the development and execution of urban resilience projects in member cities

Over **230 dedicated subject matter advisors**

112 platform partners who have pledged nearly **\$230M worth of tools/services** to support our network of cities


86 Chief Resilience Officers (CROs*) placed in **47 countries** collaborating with their city leaders, city departments, and each other

\$160M mobilized for resilience projects to date

* A Chief Resilience Officer (CRO) is top-level advisor that reports directly to the City Mayor/Leader. The CRO is the point person for resilience building, helping coordinate all of the city's resilience efforts. More specifically, the CRO works across departments and with the local community to identify the city's challenges, and develop the resilience strategy

100 RESILIENT CITIES

100 RC's network of cities is diverse and dynamic



We operate in

- 6 continents
- 21 languages
- 47 countries
- 24 US cities

In cities with populations ranging from

40 thousand to 21 million

Yet member cities face a common set of shocks and stresses

Most common shocks in the US and globally: rainfall flooding, infrastructure failure, extreme heat, drought, and earthquake

And aging infrastructure, lack of affordable housing, environmental degradation, economic inequality, and inadequate public transportation are the most common stresses in the US and globally.

100 RESILIENT CITIES

As part of the core offerings, 100RC provides member cities with four primary types of support

1

Funding to hire a Chief Resilience Officer (CRO)

100RC provides seed funding to create a CRO position, a top-level advisor that reports directly to the City Mayor/Leader. The CRO is the point person for resilience building, helping coordinate all of the city's resilience efforts

2

Support to develop a City Resilience Strategy

Led by the CRO and 100RC, the City identifies its core shocks and stresses, reviews its abilities to address these challenges, and develops actionable and implementable initiatives

3

A Platform of services to support strategy development & implementation

Through its platform of partners, 100RC provides a suite of resilience-building tools and services to support strategy through implementation process (including financial advisory support)

4

Membership in the 100RC Network

100RC's network allows its cities, partners, and practitioners to share learnings and leverage best-in-class solutions

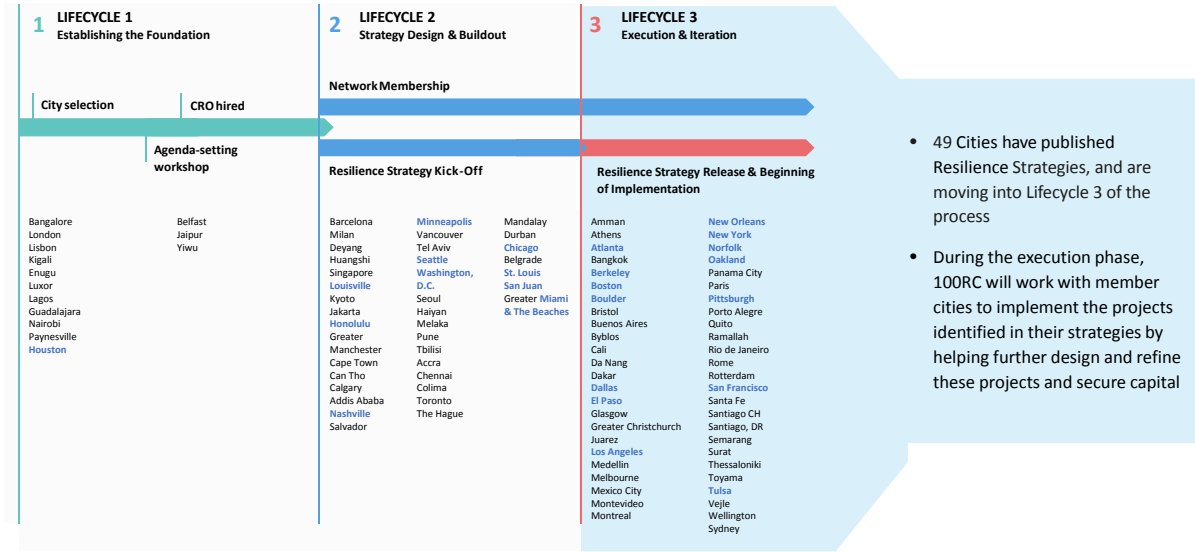
100 Resilient Cities supports **the integration and implementation of resilience** into member cities' planning and projects/initiatives. Leveraging its expertise, network of partners, suite of tools and services, **100RC works hand-in-hand with member cities to:**

- Embed resilience in Cities' processes, policies, and practices
- Build resilience into and deliver prioritized resilience projects

Member cities are now pivoting towards the “Execution & Iteration” phase of the 100RC process

100 RESILIENT CITIES


100RC City Engagement Roadmap




Mayors believe in resilience and the value of 100 Resilient Cities...

100 RESILIENT CITIES


“Resilience in Oakland means tackling systemic, interdependent challenges, such as equitable access to quality education and jobs, housing security, community safety and vibrant infrastructure to prepare us for shocks like earthquakes and stresses like climate change...we need to rethink old paradigms and balance the equation to opportunity while building more creative and vibrant infrastructure to support our promising future.”

 **Libby Schaaf, Mayor**
OAKLAND, USA


“By working together as a community, leveraging expertise and resources available through 100RC, and creating a formal and intentional resilience plan, we will continue to thrive at sea-level.”

 **Paul D. Fraim, Former Mayor**
NORFOLK, USA


“Resilience is so much more than disaster preparedness; it is a value that guides everything we do in Los Angeles, because we know that today’s decisions shape the lives of our children and grandchildren...we are grateful to 100 Resilient Cities for their support, and proud to lead with a forward-looking plan that will strengthen our infrastructure, protect our economy, make our institutions more inclusive, and create safer neighborhoods.”

 **Eric Garcetti, Mayor** LOS ANGELES, USA

“We’re proud to partner with... 100RC as the City of Pittsburgh continues to develop and investigate stronger energy infrastructure investments.”

 **William Peduto, Mayor**
PITTSBURGH, USA

“This Strategy is a cohesive roadmap with ambitious, yet practical initiatives that position Atlanta to be a global leader in the urban resilience movement.”

 **Kasim Reed, Former Mayor**
ATLANTA, USA

The mission of 100RC's Resilience Finance team is to help cities cultivate projects to help attract and mobilize funding for implementation

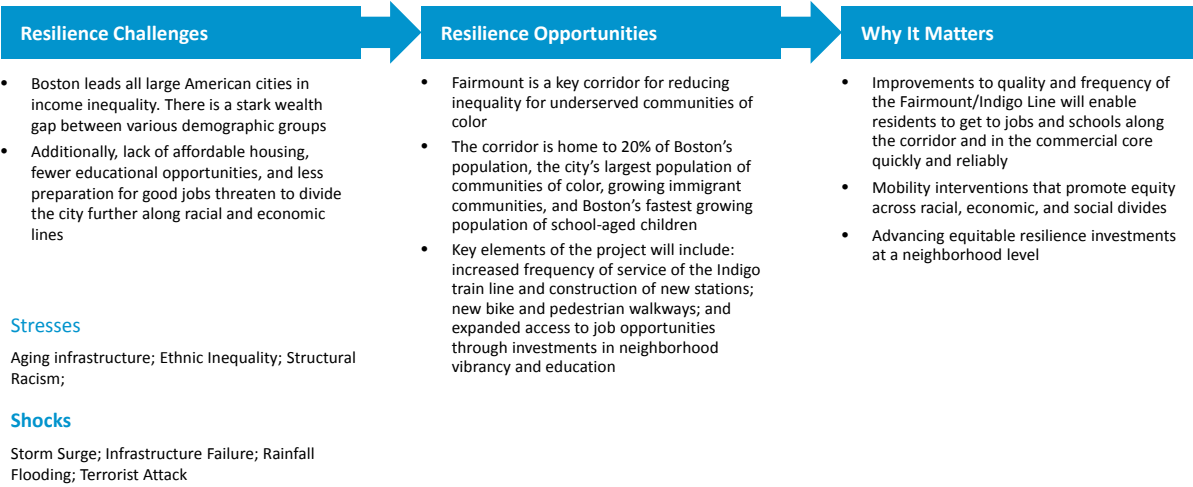
Traditional "Strategy" Role		ResFin Resources Development			TURF
Providing support to member cities to develop fundable proposals that lead to bankable projects	Developing, managing and cultivating financial partnerships	Developing a Resilience Finance curriculum with the Learning Team that supports CRO and 100RC staff development	Curating and cultivating list of Project Preparation Facilities to allow 100RC staff and member cities identify the right resources to support the project development cycle	Managing and cultivating the "pipeline of projects" (priority projects needing finance or funding) + developing an organizational resource to support this	Guiding The Urban Resilience Fund (TURF) + Resilience Screen to reality – effort undertaken by 100RC/RF to mobilize private sector capital towards resilient infrastructure

100RC's platform partners include academic institutions, non-profit organizations, and corporations from a wide-range of industries

Sample Industry/Sector	Sample Partners
Finance	     
Buildings	   
Information & Technology	    
Urban Planning	    

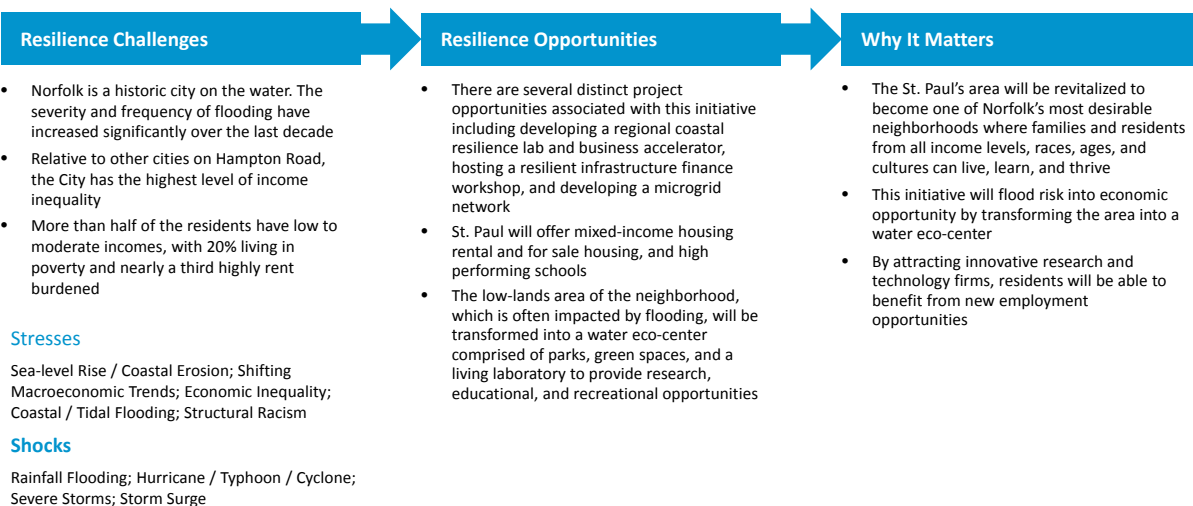
Boston | Fairmount Corridor Case Study

Project Overview: Providing frequent fair service on the Fairmount/Indigo Line, with short-term vision of improving frequency, connections, and experience and long-term vision of providing subway level service and regional connections



Norfolk | St. Paul's Area Redevelopment and Transformation Case Study

Project Overview: Addressing poverty and flood risk by transforming an area of highly concentrated poverty adjacent to downtown into a vibrant mixed-use neighborhood, which includes public housing communities



Resilient Community Development Finance Campaign

The goal of the Resilient CDF (ResCDF) Campaign is to enhance community development and mission related engagement and investment into resilience projects, through education, elevated awareness around potential project investment opportunities and the strong alignment with the overall mission of CDFIs.

The focus of the involved organizations is on increasing investments and creating lender and city partnerships, which will be done through education and awareness building, as well actual project finance development and discussion.

Activities	Tools
<ul style="list-style-type: none"> • Webinars and panels • Meetings / focus groups • Project development • Special cohorts via networks (e.g. OFN, Federation), themes, etc. • Road show at key community development events/conferences, regional meetings with partners • Pilot initiatives (e.g., Lending/Investment + filter testing with CDFIs such as Clearinghouse CDFI, CEI and Craft3 and some of the city-based CDFIs that can tie directly to 100RC member cities) • Communications/PR rollout 	<ul style="list-style-type: none"> • Resilient investment filter (for community development finance, mission investing, social impact investing, CDFIs) • Presentation materials • Fact sheet/FAQ on "lending with resilience" • 100RC priority initiative "prospectus" • Resilience Accelerators • Other 100RC tools, processes and subject matter advisors as applied to enhancing the resilience of the city and CDFI mandated projects where there is mutual benefit

Q & A

Contact: Stewart Sarkozy-Banoczy, Senior Advisor, Resilience Finance
ssarkozy@100resilientcities.org, 605.430.9398, @precoverylabs